

https://docs.google.com/presentation/d/1D5G4yphkMALyGhK5C97KdEmM6Jw5d7t8id4-g2P93T188vZz_B_724

WAIN EDE | WFS 92.1 FM | Spotify - Web Player | BUFOOT LEGENDS FM | DAN WHITER

Sustainability and Resilience in Pittsburgh | **PPFA**

File Edit View Insert Format Slide Arrange Tools Help

Search | Click to add speaker notes

Pittsburgh Greenways Partnership Program

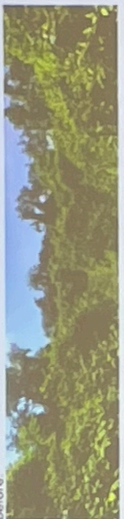
ON EPGH
 REGIONAL PITTSBURGH


HAZELWOOD INITIATIVE
 growing together

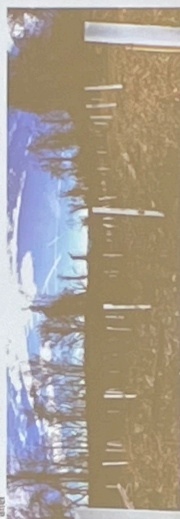
LANDFORCE

ALLEGHENY GOATSCAPE

TREE PITTSBURGH

before: 

mid-shump: 

after: 


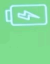





bradenmeslow
 Joell Baker-Gutierrez

Laptop screen displaying a web browser with a search engine results page. The search results include a prominent image of a green landscape with a blue sky and a search bar at the top.



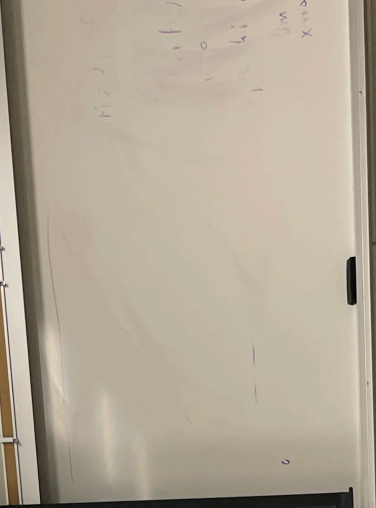
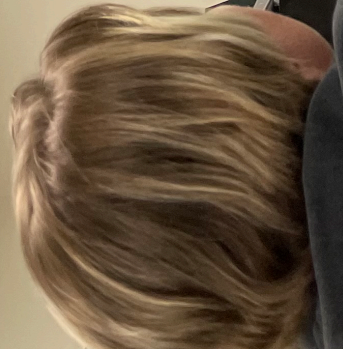
apture

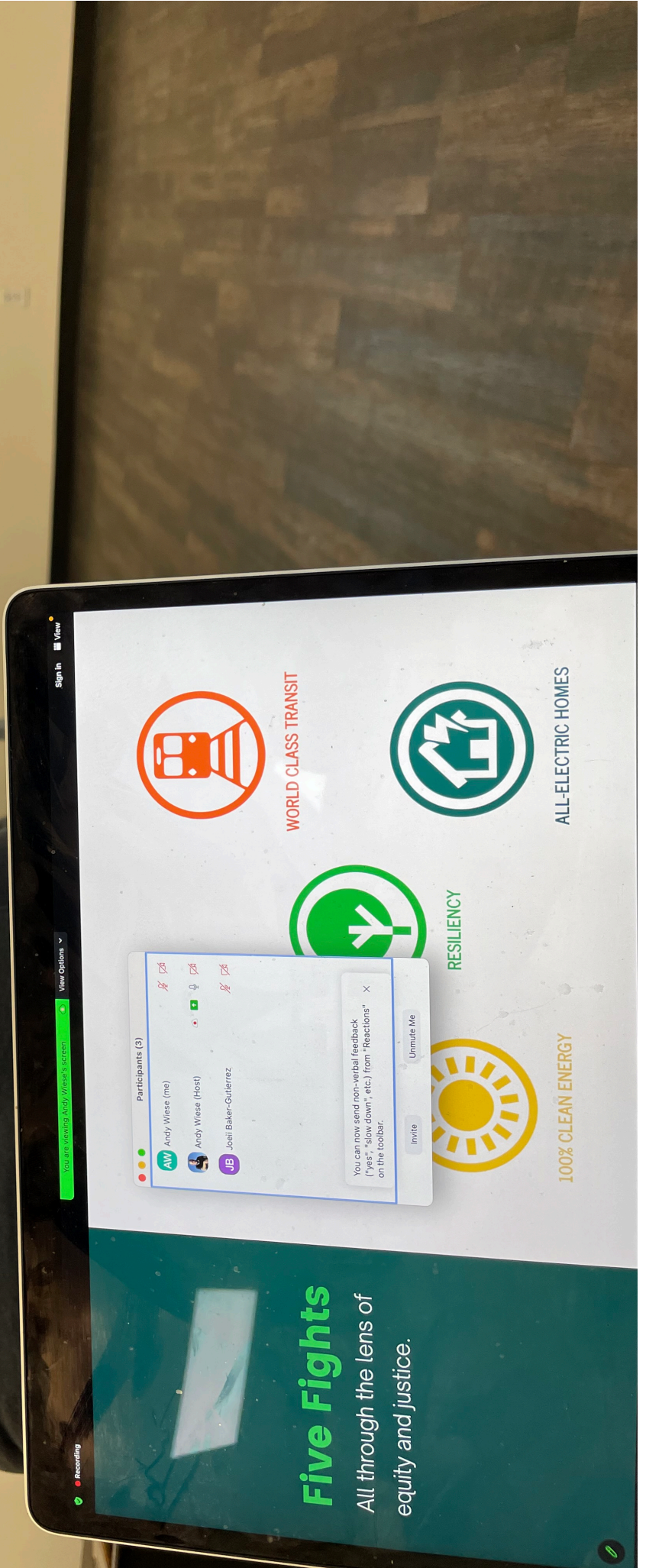
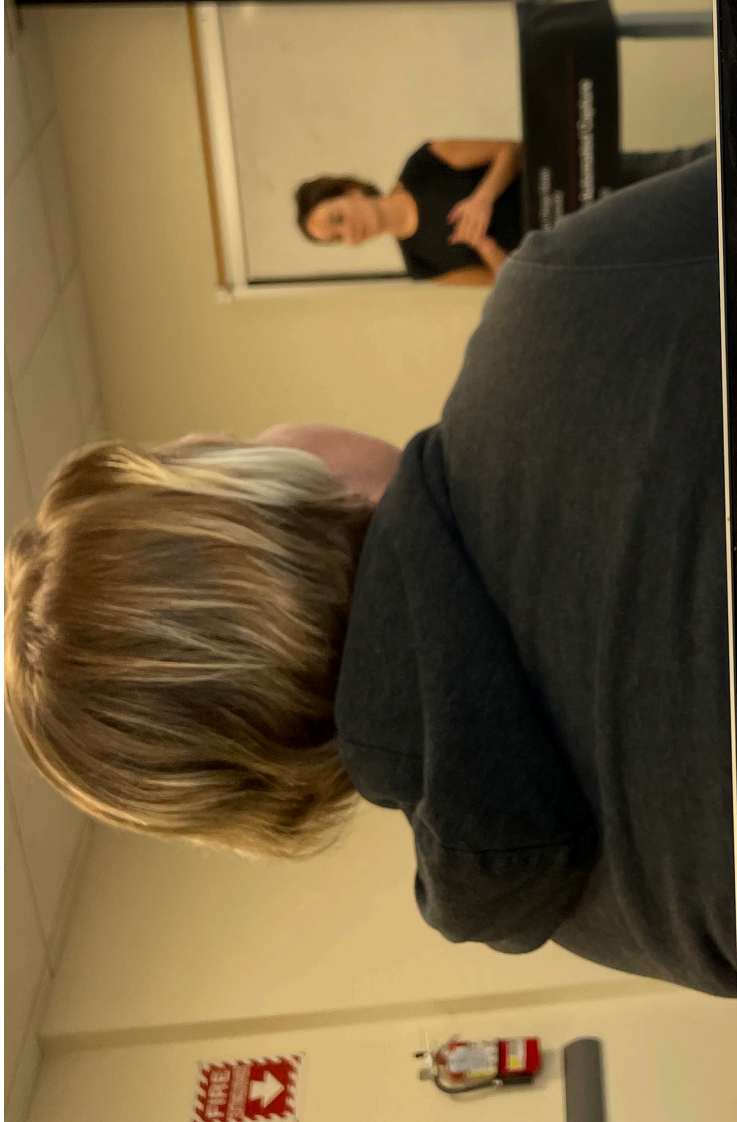
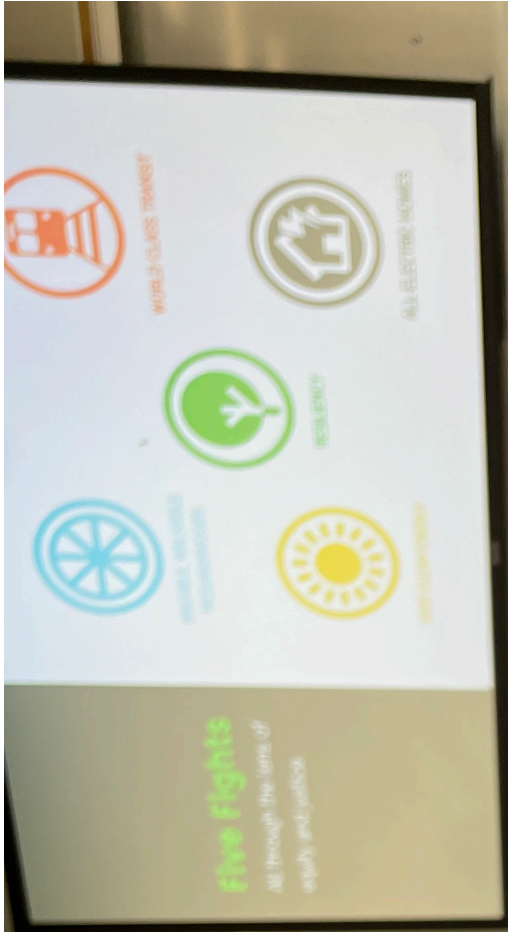


 Renewable Energy Sources  SD Community Power  Community Solar	 Fossil-Free Transportation   Efficient & Accessible Public Transit	 Fossil-Free & Energy Efficient Buildings  Updated Reach Codes  All-Electric Appliances	 Natural Climate Solutions & Resilient Ecosystems  Urban Canopy & More Shade Trees  Wetland Restoration & Preservation	 Food Systems & Circular Economy  Regenerative Agriculture & Aquaculture  Locally Sourced Food & Community Gardens
---	--	--	---	---



SDSU San Diego State University
 This Connected Classroom offers Automated Capture
its.sdsu.edu/capture







Sustainability Speakers Series

Hosted by
History 581:
The Green City



Zoom or In Person (E328):
Seating Limited so RSVP:
Andrew Wiese, awiese@sdsu.edu

Zoom:
<https://SDSU.zoom.us/j/86286820596>

November 2: Preserving Urban Biodiversity

4:00-5:15pm: David Hogan, Chaparral Lands Conservancy

5:30-6:40pm: Debby Knight, Friends of Rose Canyon

November 9: Urbanism and Climate Change

4:00-5:15pm: Ali Mariko Dressel, SD Climate Action Campaign

5:30-6:40pm: Rebecca Kiernan, formerly, Director of Sustainability and Resilience, City of Pittsburgh

November 16: New Urban Environmentalisms

4:00-5:15: TBA

5:30-6:40: Clayton Tschudy, San Diego Canyonlands

November 30: Green Building and Development

4:00-5:15pm: Steve Pomerence, LPA Arch/Design

